

A PLAT OF  
**STUART WEST, P.U.D.**  
**PHASE III B**  
 BEING A PORTION OF SECTION 13,  
 TOWNSHIP 38 SOUTH, RANGE 39 EAST  
 MARTIN COUNTY, FLORIDA

FEBRUARY, 1987

SEE SHEET 5 OF 5

I, MARSHA STILLER, CLERK OF THE CIRCUIT COURT OF MARTIN COUNTY, FLORIDA, HEREBY CERTIFY THAT THIS PLAT WAS FILED FOR RECORD IN PLAT BOOK 10, PAGE 70, MARTIN COUNTY, FLORIDA, PUBLIC RECORDS, THIS DAY OF \_\_\_\_\_ A.D., 1987.

MARSHA STILLER, CLERK CIRCUIT COURT MARTIN COUNTY, FLORIDA

BY DEPUTY CLERK

FILE NO. \_\_\_\_\_

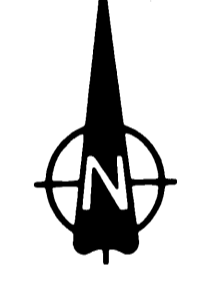
**LEGEND**

- ACCESS AND UTILITY EASEMENT
- MARSH PRESERVATION AREA
- DRAINAGE EASEMENT
- 20' DRAINAGE MAINTENANCE EASEMENT
- EASEMENT

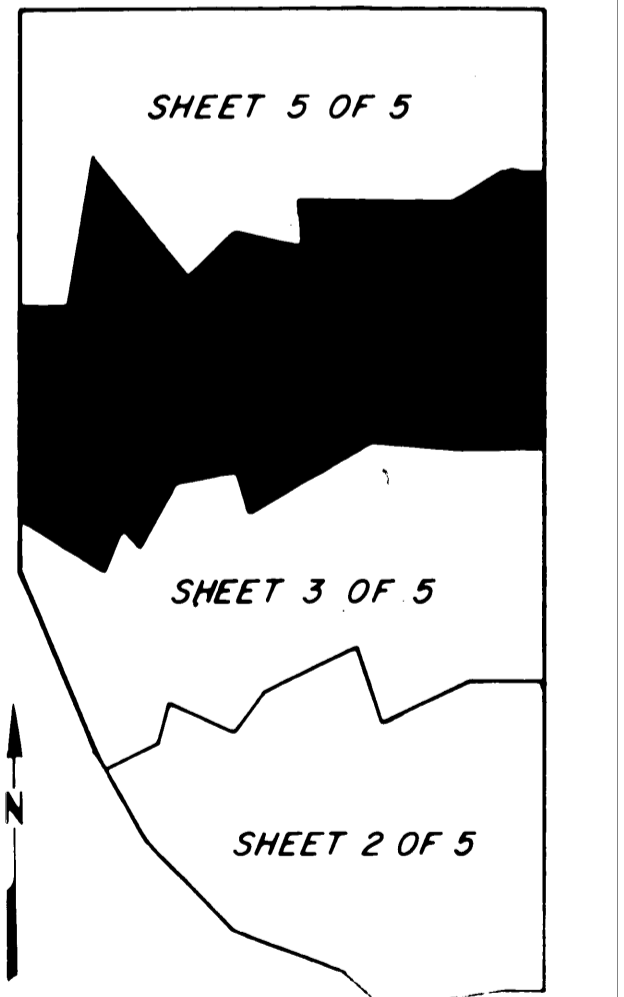
- PERMANENT REFERENCE MONUMENT SET
- PERMANENT CONTROL POINT SET

D.M.E. = DRAINAGE MAINTENANCE EASEMENT BEARING BASE

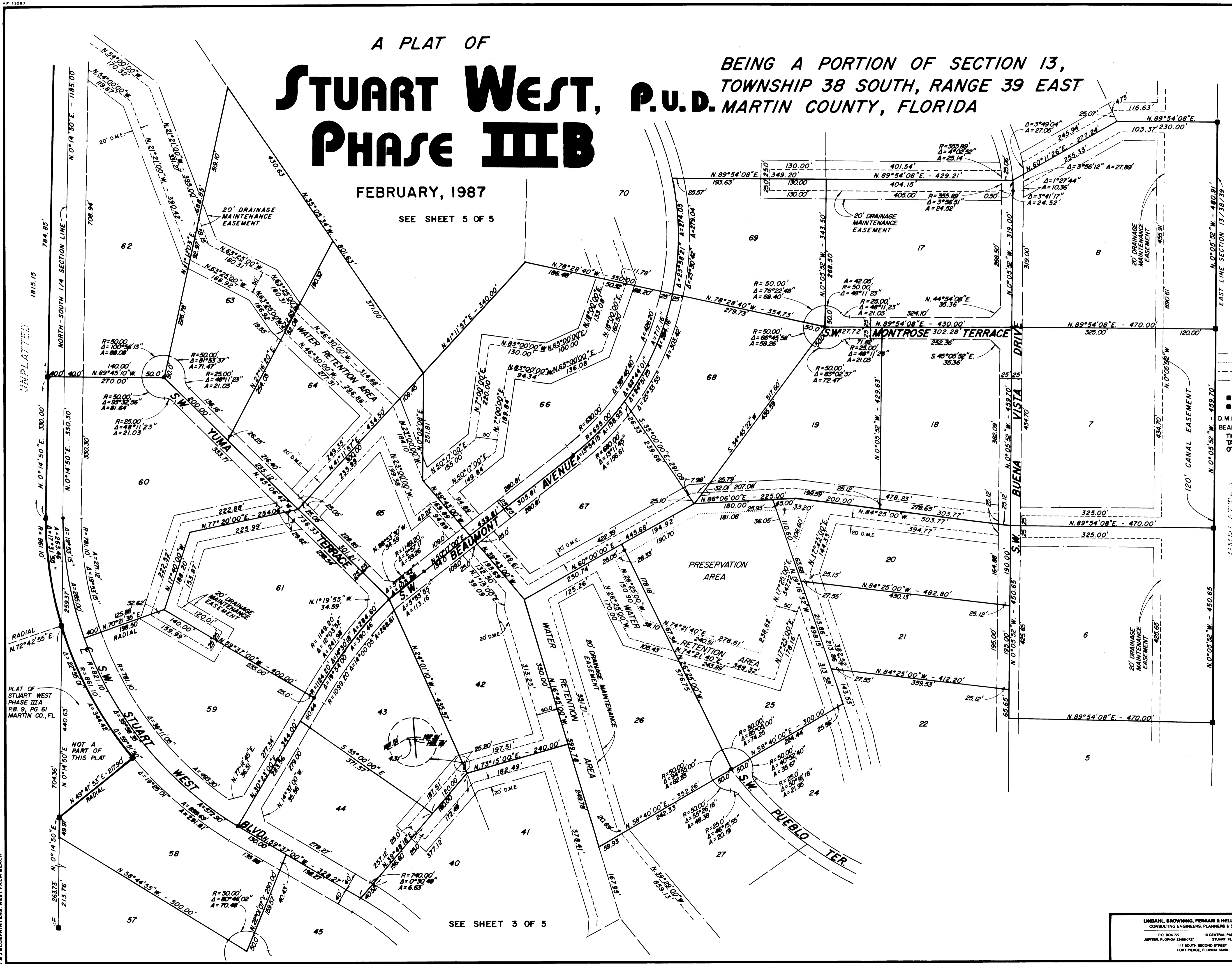
THE SOUTH LINE OF SECTION 13 IS TAKEN TO BE S 89° 50' 33" W AND ALL OTHER BEARINGS ARE RELATIVE THERETO.



SCALE = 1" = 100'



**KEY MAP**



SEE SHEET 3 OF 5

PLAT OF STUART WEST PHASE III A PB 9, PG 61 MARTIN CO., FL

NOT A PART OF THIS PLAT

J. & J. BLUEPRINTERS, WEST PALM BEACH

LINDAHL, BROWNING, FERRARI & HELLSTROM, INC.  
 CONSULTING ENGINEERS, PLANNERS & SURVEYORS  
 P.O. BOX 127 10 CENTRAL PARKWAY, SUITE 400  
 JAYWALK, FLORIDA 32608-0127 STUART, FLORIDA 32957  
 111 SOUTH SECOND STREET  
 FORT PIERCE, FLORIDA 33400